

The logo for the Metropolitan Planning Council features the text "Metropolitan Planning Council" in a black, sans-serif font. The word "Metropolitan" is in a smaller size than "Planning Council". An orange arc is positioned above the text, starting under the 'M' and ending under the 'C'. A thin horizontal line is located below the text.

Metropolitan **Planning** Council

Calumet Stormwater Collaborative

Join URL: zoom.us/j/96781880490

or, Dial (312) 626-6799 | Meeting ID: 967 8188 0490 | Password: 061778

We will begin shortly!

The logo for the Metropolitan Planning Council features the text "Metropolitan Planning Council" in a bold, black, sans-serif font. Above the text is a stylized orange arch that spans the width of the words "Planning" and "Council". A thin horizontal line is positioned below the text.

Metropolitan Planning Council

Calumet Stormwater Collaborative

Join URL: zoom.us/j/96781880490

or, Dial (312) 626-6799 | Meeting ID: 967 8188 0490 | Password: 061778

November 6, 2020

Justin Keller

jkeller@metroplanning.org

- **Welcome + Introductions**
- **Member Updates**
- **Extended Member Update**
- **Presentation**
- **Work Groups**

Introductions

- **In chat box, type:**
 - Name, Organization
- **On the phone?**

Member Updates

- **Type “update” in the chat box**
- **I will call on people**
 - *Unmute!*
 - *Webcam on, please*

Calumet Stormwater Collaborative

Seeking five volunteers to join CSC Steering Committee:

- **Goals**

- *identify discussion & presentation topics*
- *evaluate Work Groups regarding CSC's Collective Impact*
- *expand group representation and diversity (i.e., recruitment)*

- **Expectations**

- *meet "in person" 2-3 times/year*
- *email & phone communication*

Extended Member Update

Green Infrastructure Baseline Inventory Phase 2 Advisory Committee

Justin Keller

Metropolitan Planning Council



Foundational Activities

ACTIVITY 1

- Establish a baseline of existing green infrastructure

ACTIVITY 2

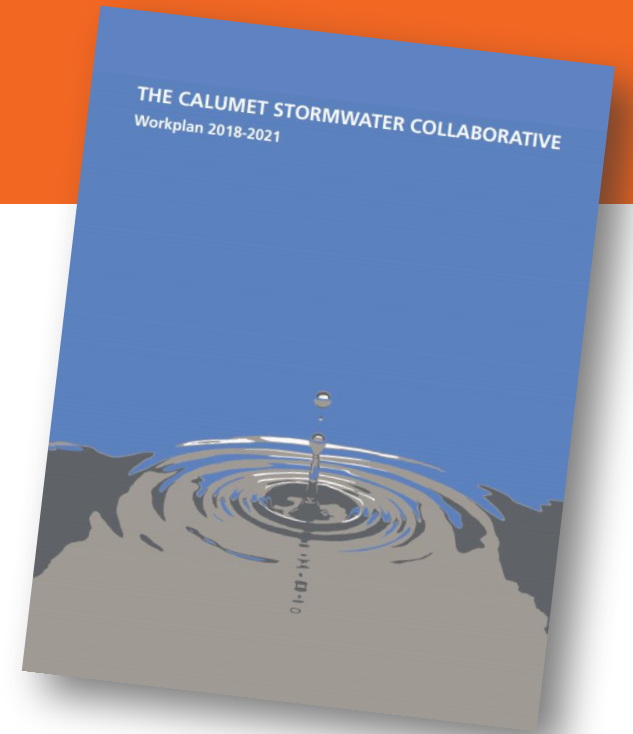
- Establish a baseline of non-overbank flooding

ACTIVITY 3

- Develop and begin to execute systems to provide relevant training and strengthen management systems to bolster green infrastructure implementation and maintenance

ACTIVITY 4

- Establish a baseline of municipal capacity in stormwater management



GI Baseline – Phase 1

- Literature review of similar efforts (Milwaukee, DC, DuPage County)
- Advisory Committee meetings (Jan-June 2019) + survey
- Interviews with municipal actors
- CSC + Work Group meetings

This project was supported by the Illinois Department of Natural Resources' Coastal Management Program through a federal grant from the National Oceanic & Atmospheric Administration, U.S. Department of Commerce.



GI Baseline – Phase 2

1. Convene data providers --> Meeting #1 (Oct. 29)
2. Collect existing data
3. Contact main Calumet-region engineering firms
4. Conduct direct outreach, aka “fill in the gaps”
5. Build the dataset

Next steps

- **Draft documents for feedback**
 - The GIBI
 - What's the WIIFM?
 - Resources to support data collection
- **Data collection**
- **Advisory Committee meeting #2 (Dec-Jan)**



Calumet Stormwater Collaborative

November 6, 2020

Justin Keller
jkeller@metroplanning.org

Presentation

Urban Flood Mitigation: Wilmette Neighborhood Storage Case Study

Darren Olson

Christopher B. Burke Engineering, Ltd.

Matt Moffitt

Baxter & Woodman Consulting Engineers

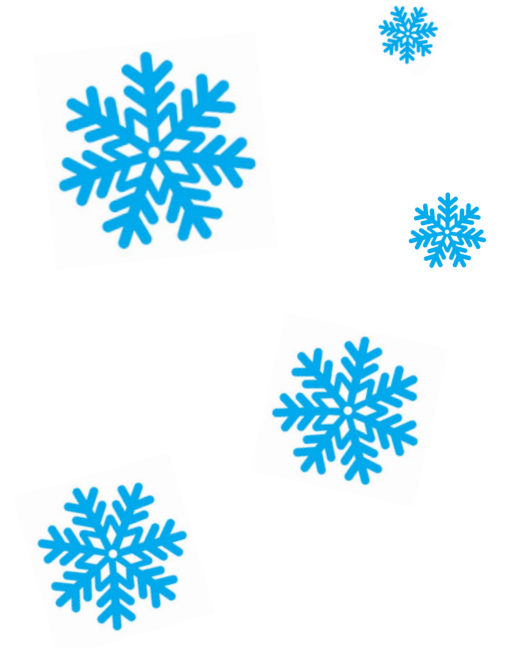
Wrap-Up

Next meeting:

ANNUAL HOLIDAY PARTY

December 4, 10:00 a.m. – noon

Location: virtual



Thanks, and stay safe!

Work Groups

Training & Maintenance Work Group

Join URL:

illinois.zoom.us/j/87317430610?pwd=SGZrTGxrMEI3NDIYTDdTV1drZnltZ09

Everyone else

Stick around! Agenda:

- Urban Flooding Baseline update & discussion