

EMERALD⁺
SOUTH
COLLAB

what is
emerald south

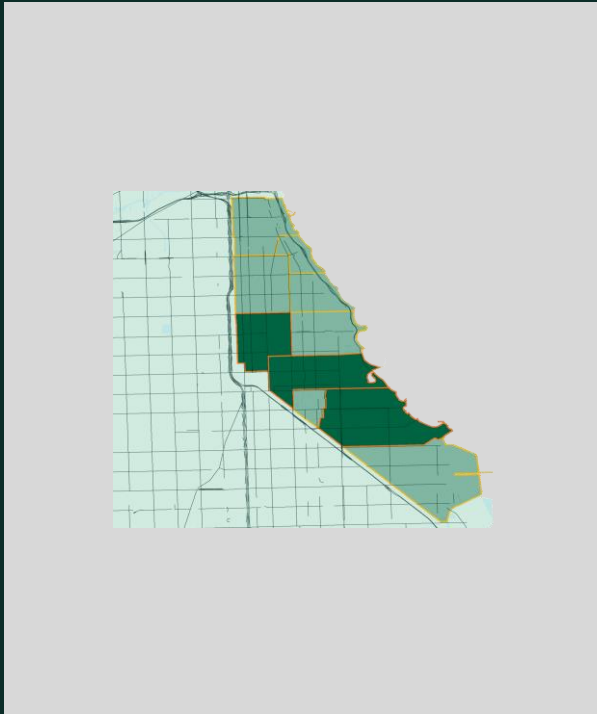
what if we understood Emerald South as a
regional economy

~220,000
Regional Population

~97,000
Regional Households



Emerald South's regional population is the size of a....



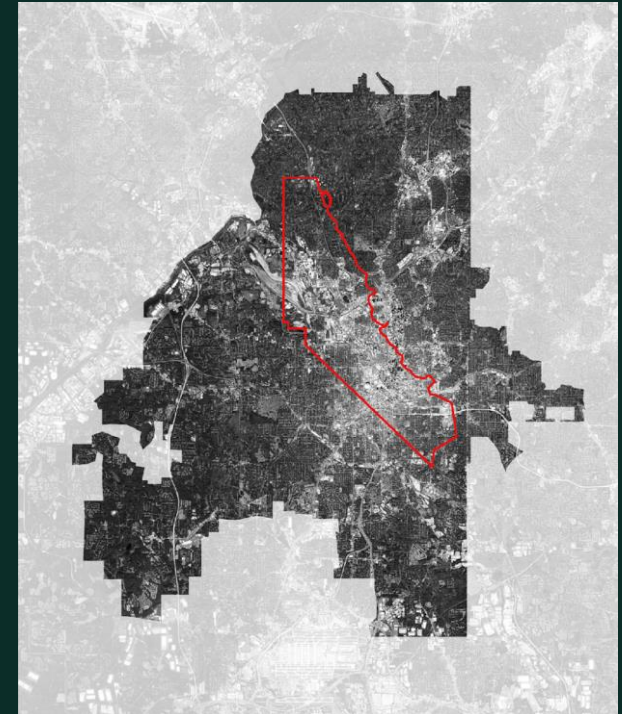
Emerald South Region
Chicago, IL
220,000 residents
16.5 mi²
13,333 people/mi²

college town and



University of Virginia
Richmond, VA
223,000 residents
62.6 mi²
3,873 people/mi²

Black ATL



Atlanta, GA
255,304 Black residents
136.8 mi²
3,858 people/mi²

we are
#escollab

Our Mission

Our mission is to **attract** and **coordinate** investment through community **convening** and **collaborative partnerships** that increase local **ownership and prosperity**.

applying our competencies

Our Work



Capital Attractor.

Retaining, Attracting, Succeeding, and Expanding businesses, investments, and influence



Truth Teller.

Collecting and disseminating asset-based research to create our own neighborhood narratives and data-driven decision making



Collaborator.

Bringing together and resourcing local organizations in action-oriented collective economic growth work



Advocate.

Standing up for and advancing economic public policies and planning that benefits all residents and businesses

guided by research, data & planning

our research collaborative



five labs working to address challenges across five key dimensions of urban life: crime, education, health, poverty, and energy & environment



a planning and design management practice that works to reimagine, reshape and rebuild just cities and communities



provides reliable, up-to-date information about the regional economy, highlighting Chicago as a great place for business



a mission-driven organization committed to inclusive and equitable economic growth



a tier one technology and innovation hub and promote inclusive economic growth



engages youth to close the information gap so we can access the resources we all need to do good, stay well, and live long

Emerald South region is rich with innovation

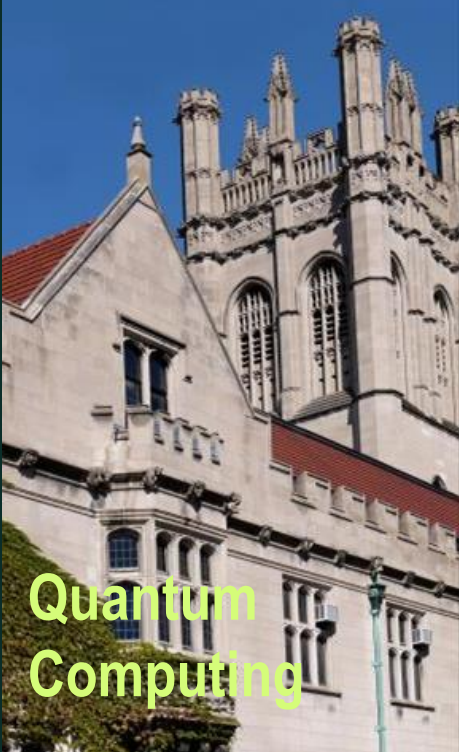
Obama Presidential Center



University of Chicago Hospital



University of Chicago



Illinois Institute of Technology



Silver Room



imagine
what we could do
together

if we invested
\$100m

repair

Reparative Investments
Own the Land

that reverse the harm of redlining through equitable valuation of property and increased Black ownership of land, homes and businesses



Home & Land Ownership
 Retain and attract 10,000 residents and the Black middle class



Black Land Developers
 Increase the capacity of Black developers as landowners and developers of over 2 million sf of land assets



LandCare Cooperative
 Build local stewardship of vacant land assets

restore

Restorative Investments
Assets, Anchors & Avenues

that rebuild and grow population density, businesses, industry, knowledge, cultural assets and jobs through cooperative economics, ownership and partnerships



Cultural Assets
 Restoring, strengthening and growing local cultural institutions organizations and producers as economic drivers



Next Economy
 Connecting research and industry to fuel the next economy for the south side and 10,000 new jobs



Emerald Necklace
 Restoration and activation of 1,000 acres of historic park land



Commercial Corridors
 10 corridors 100 businesses annually

resilient

Resiliency Investments
**Connected Local
 Connected Global**

that protect against economic, health and social justice shocks and support community, household and institutional self-reliance



Digital Connectivity
 Every Emerald South household will have access to high speed wifi



Transit Connectivity
 Emerald South is connected to the region and the world via its transit hubs



Social Connectivity
 Emerald South institutions and organization bring and connect over 10 million people annually on the South side of Chicago


Initiatives
driving
the work


Terra Firma

A five-year, multi-phase **\$25m initiative** to clean, green, beautify, maintain and activate **205 acres** of private- & city-owned vacant lots within Washington Park, Woodlawn and South Shore.

Restore, Reinvest, & Renew (R3) ICJIA grant award **\$2.5m**

Legend

 City-owned lots along Commercial Corridors (~50 acres)

 Private & city-owned vacant lots in Emerald South (~205 acres)

Terra Firma at-a-glance: Phase 1

A **12-month project** to clean, green, beautify, activate and maintain a target of **20-30 acres** (56 publicly-owned parcel clusters) along **4 corridors within Washington Park, Woodlawn and South Shore**



\$2.66 million awarded to Emerald South from the State of Illinois ICJIA R3 Grant, The Chicago Community Trust, Pritzker Traubert Foundation

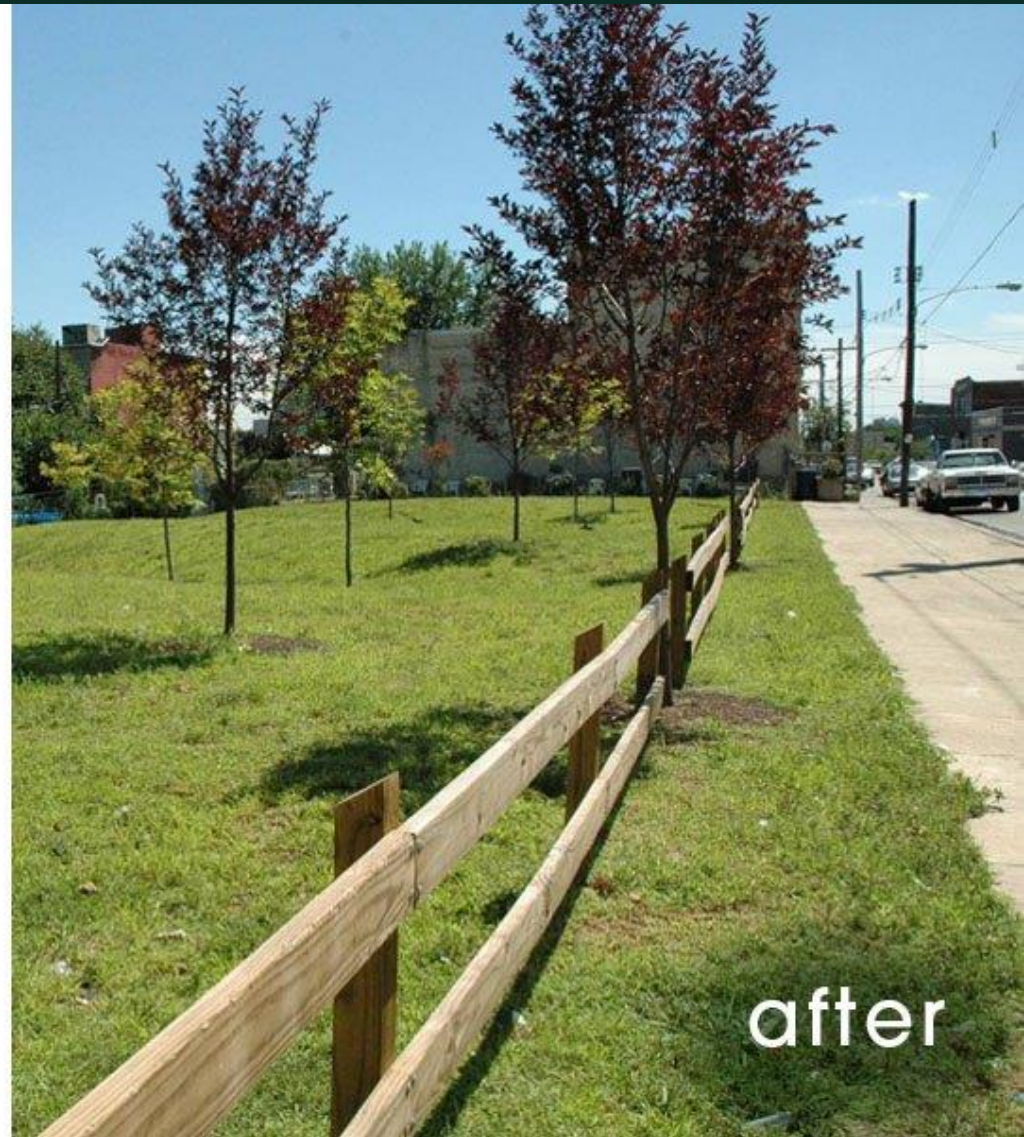


Lead Grantee

Hiring grants management and overall program management capacity



before



after

Nuisance

Stabilize

Beautify

design ideas



MID-BLOCK SITE: EXISTING



MID-BLOCK SITE: PROPOSED (FLOWER FIELDS)

TREATMENT

- Lot tidying
- Split rail fence
- High grass border
- Flower field plantings

design ideas



MID-BLOCK SITE: EXISTING



MID-BLOCK SITE: PROPOSED (FLOWER FIELDS)

design ideas



WHOLE BLOCK SITE: EXISTING

WHOLE BLOCK SITE: PROPOSED (RAISED BEDS)

Outcomes Overview

Mental Health

- Remove debris and installing attractive railing
- Strategically placed benches/tables/art to create neighborhood hubs

Physical Health

- Greened walkways
- Interactable gardens to practice green exercise

Reduced Crime

- Clearing and mowing lots and prevent dumping
- Increasing visibility and sightlines along commercial corridors

Increased Land Value

- Remove worst offenders dragging down land values
- Use pocket parks strategically to bring lot greening to isolated residential blocks

Improved Walkability

- Install shrubs and trees to improve walking experience
- Bridge gaps in business activity along commercial corridors with green “check points”

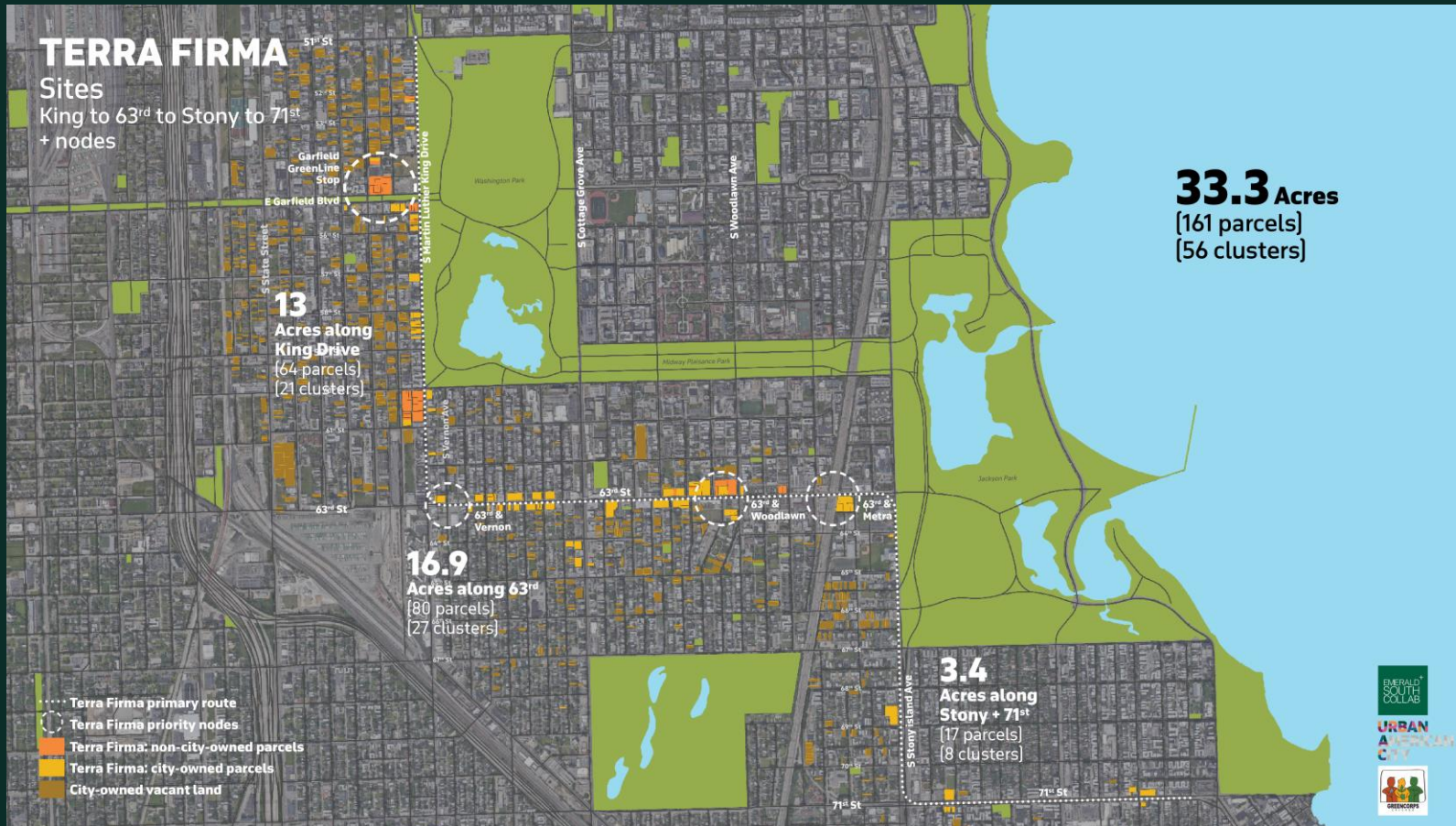
Environmental Resiliency

- Removing pollutants, attracting pollinators & intercepting stormwater
- Rain gardens to control flooding
- Interconnected green rain parks

Terra Firma at-a-glance: Phase 1

A Target of 20-30 Acres

56 publicly-owned parcel clusters (33 acres) extending from 47th& King Drive, to 63rd Street to Stony Island, to 71st Street, to Exchange.



Removing pollutants, attracting pollinators & intercepting stormwater

FORBS ORGANIZED BY BLOOM TIME		SPRING	SUMMER	FALL	WINTER	SUNLIGHT	HEIGHT	SPACING	MOISTURE	SOIL TYPE	COMMON ECOSYSTEM	ATTRACTION	DRY/TOLERANCE
COLUMBINE	<i>Aquilegia canadensis</i>						2-3'	1-1 1/2'		SANDY, ROCKY, ACIDIC	WOODLAND		
GOLDEN ALEXANDERS	<i>Zizia aurea</i>						1-3'	1-2'		LOAM	WET PRAIRIE		
FOXGLOVE BEARDTONGUE	<i>Penstemon digitalis</i>						2-3'	1-1 1/2'		LOAM	BLACK SOIL PRAIRIE		
WILD QUININE	<i>Parthenium integrifolium</i>						1-2 1/2'	1-2'		LOAM	BLACK SOIL PRAIRIE		
SULLIVAN'S MILKWEED	<i>Asclepias sullivanti</i>						2-3'	1-2'		LOAM	WET PRAIRIE		
WHITE WILD INDIGO	<i>Baptisia alba</i>						3-6'	2 1/2-3'		TOLERANT	BLACK SOIL PRAIRIE		
NEW JERSEY TEA	<i>Ceanothus americanus</i>						2-3'	1 1/2-3'		LOAM, ROCKY	BLACK SOIL PRAIRIE		
PURPLE PRAIRIE CLOVER	<i>Dalea purpurea</i>						1-3'	1 1/2-2'		TOLERANT	BLACK SOIL PRAIRIE		
PALE PURPLE CONEFLOWER	<i>Echinacea pallida</i>						1-3'	1-1 1/2'		LOAM, CLAY, ROCKY	BLACK SOIL PRAIRIE		
FALSE SUNFLOWER	<i>Heliopsis helianthoides</i>						3-5'	1 1/2-3'		TOLERANT	WOODLAND BORDER		
YELLOW CONEFLOWER	<i>Ratibida pinnata</i>						2-4'	1 1/2-2'		LOAM, CLAY LOAM	BLACK SOIL PRAIRIE		
BLACK-EYED SUSAN	<i>Rudbeckia fulgida</i>						2-2 1/2'	1 1/2-2'		TOLERANT	DRY PRAIRIE		
SWAMP MILKWEED	<i>Asclepias incarnata</i>						3-5'	1 1/2-3'		LOAM, CLAY, SILT	FLOODPLAIN		
POKE MILKWEED	<i>Asclepias exaltata</i>						2-6'	2-3'		LOAM, SANDY	WOODLAND OPENING		
BUTTERFLYWEED	<i>Asclepias tuberosa</i>						1-2 1/2'	1-3'		SANDY, ROCKY, ACIDIC	SAND PRAIRIE		
WILD BERGAMOT	<i>Monarda fistulosa</i>						2 1/2-4'	2-3'		LOAM	BLACK SOIL PRAIRIE		
COMPASS PLANT	<i>Silphium laciniatum</i>						6-12'	1 1/2-3'		LOAM	TALLGRASS PRAIRIE		
COMMON MOUNTAIN MINT	<i>Pycnanthemum virginianum</i>						1-3'	1-1 1/2'		TOLERANT	WET PRAIRIE		
RATTLESNAKE MASTER	<i>Eryngium yuccifolium</i>						2-5'	1 1/2-2'		TOLERANT	BLACK SOIL PRAIRIE		
PURPLE JOE PYE WEED	<i>Eutrochium purpureum</i>						3-7'	3-4'		SILT/SANDY LOAM	WET PRAIRIE		
PRAIRIE BLAZING STAR	<i>Liatris pycnostachya</i>						2-4'	1-1 1/2'		LOAM, CLAY	BLACK SOIL PRAIRIE		
OBEDIENT PLANT	<i>Physostegia virginiana</i>						3-4'	1-2'		LOAM	WET PRAIRIE		
GREAT BLUE LOBELIA	<i>Lobelia siphilitica</i>						2-3'	1-1 1/2'		TOLERANT	UPLAND WOODLAND		
MISSOURI IRONWEED	<i>Vernonia missouriensis</i>						1-3'	2-3'		LOAM	BLACK SOIL PRAIRIE		
ROUGH BLAZING STAR	<i>Liatris aspera</i>						2-5'	1-1 1/2'		TOLERANT	BLACK SOIL PRAIRIE		
SMOOTH BLUE ASTER	<i>Symphyotrichum laeve</i>						1 1/2-3'	1 1/2-2'		TOLERANT	BLACK SOIL PRAIRIE		
ELM-LEAVED GOLDENROD	<i>Solidago ulmifolia</i>						1-3'	1-3'		LOAM	MESIC WOODLAND		
NEW ENGLAND ASTER	<i>Symphyotrichum novae-angliae</i>						2-4'	2-3'		LOAM/CLAY	BLACK SOIL PRAIRIE		
SHORT'S ASTER	<i>Symphyotrichum shortii</i>						2-3 1/2'	1-1 1/2'		LOAM	MESIC WOODLAND		
OTHERS ORGANIZED BY HEIGHT													
PENNSYLVANIA SEDGE	<i>Carex pensylvanica</i>						1/2-1'	1/2-1'		SANDY LOAM	UPLAND WOODLAND		
PRAIRIE DROPSEED	<i>Sporobolus heterolepis</i>						2-3'	2-3'		LOAM, ROCKY	HILL PRAIRIE		
GRAY'S SEDGE	<i>Carex grayi</i>						2-3'	1 1/2-2'		TOLERANT	MOIST WOODLAND		
LITTLE BLUESTEM	<i>Schizachyrium scoparium</i>						2-4'	2-3'		TOLERANT	HILL PRAIRIE		
INDIAN GRASS	<i>Sorghastrum nutans</i>						3-7'	2-3'		TOLERANT	SAVANNAH		
BIG BLUESTEM	<i>Andropogon gerardi</i>						3-8'	2-3'		TOLERANT	TALLGRASS PRAIRIE		

SOURCES:
 ILLINOIS WILDFLOWERS:
www.illinoiswildflowers.info
 PRAIRIE MOON NURSERY:
www.prairiemoon.com
 MISSOURI BOTANICAL GARDEN:
www.missouri.edu
 GARDENER EXPERIENCE

ATTRACTION: ATTRACTS BEES ATTRACTS HUMMINGBIRDS ATTRACTS BIRDS
 DROUGHT TOLERANCE: TOLERATES DROUGHT TOLERATES DROUGHT, BUT MAY YELLOW AND DROOP WILL NOT SURVIVE EXTENDED DROUGHT

LEGEND
 SUNLIGHT: SUN PART SUN/PART SHADE SHADE
 MOISTURE: WET MOIST MESIC DRY

ILLINOIS NATIVE PLANTS FOR THE HOME LANDSCAPE

Improving Current City Processes



The screenshot shows the header of the Office of Inspector General website for the City of Chicago. The header includes the city seal, the office name, and navigation links for 'ABOUT US', 'OUR OFFICE', 'PUBLICATIONS', 'COMMUNICATIONS', 'INFORMATION PORTAL', 'CAREERS', and 'CONTACT US'. Below the header, a breadcrumb trail reads 'AUDITS / PUBLICATIONS'. A call-to-action box on the left says 'Read the Report: Department of Streets and Sanitation Weed-Cutting Program Audit'. The main title of the report is 'DEPARTMENT OF STREETS AND SANITATION WEED-CUTTING PROGRAM AUDIT', and it is dated 'Published July 23, 2020'.

- *“Does not meet its goals for timely weed cutting”*
- *“No reliable list of vacant properties”*
- *“Cannot effectively manage City-owned vacant property”*
- *“Cannot accurately assess performance in responding to complaints”*
- *“Data system is insufficient”*

Cost of Segregation

“If metro Chicago were less segregated, it could see \$4.4 billion in additional income each year, a 30 percent lower homicide rate and 83,000 more bachelor’s degrees.”

Time to pursue policies and programs that can be implemented right now

RECOMMENDATION:

- Make vacant lands an asset
- Build capacity among community-based organizations and municipalities to redevelop vacant land.



OUR EQUITABLE FUTURE: A Roadmap for the Chicago Region

A response to The Cost of Segregation

Partnering with Chicago Architectural Biennial

483k
visitors

to the Chicago Architectural
Biennial in 2019



The Available City, asks us to consider the impact collective space can have in cities today by finding creative uses for 15,000 city-owned vacant lots

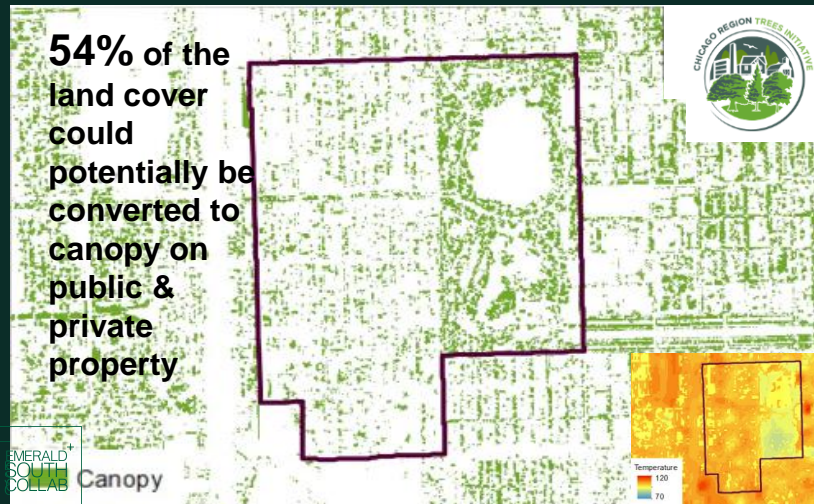
Economic benefits of tree canopies

- Urban trees **save energy** by reducing surface temperatures and shading buildings.
- They **store carbon dioxide** and **remove pollutants** from the air.
- They **intercept stormwater** and help **reduce flooding**.
- Residents preferentially buy properties that have more trees, meaning that **trees increase property value**.

Tree canopies are estimated to provide:

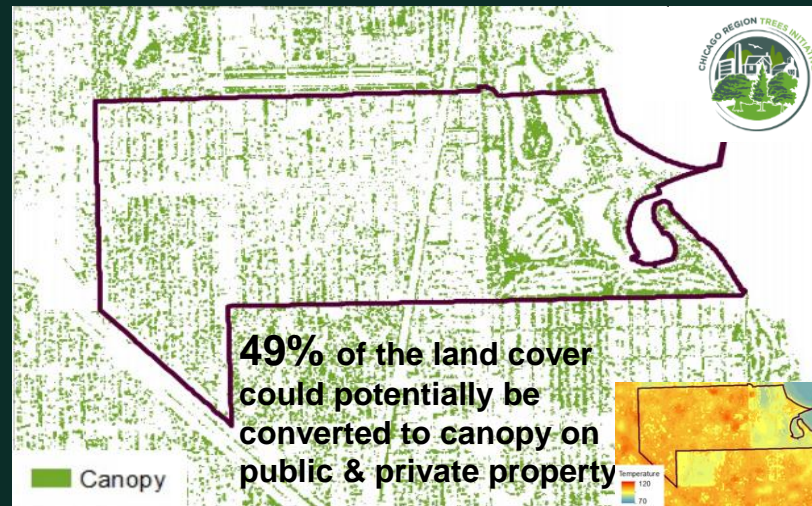
Washington Park

\$352,800 annual benefits



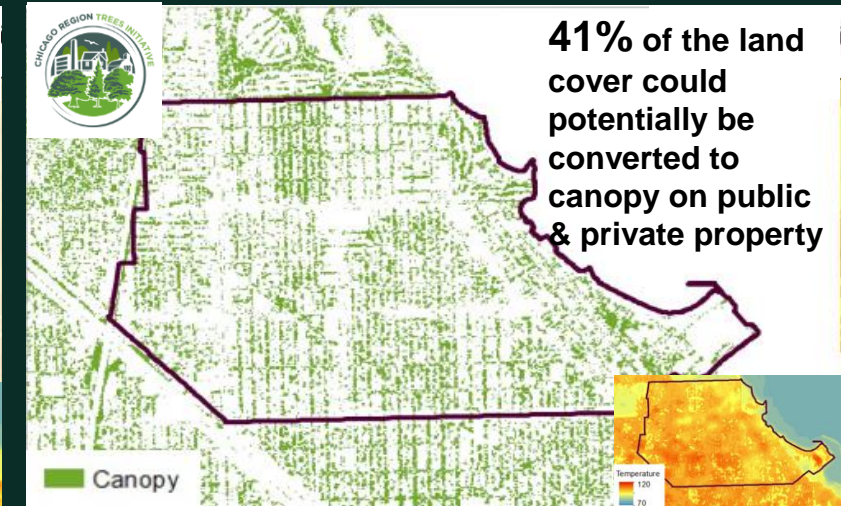
Woodlawn

\$794,200 annual benefits



South Shore

\$694,400 annual benefits



Terra Firma at-a-glance: Phase 1

Project Scope



Adult Workforce & Jobs



Entrepreneurship Training



Youth Entrepreneurship & Workforce



Site Design



Installation & Improvements



Neighbor Training & Engagement



Art & Activation



Maintenance



Data & Metrics



Primary Sub-Grantee

Greencorps will manage adult workforce training, neighbor training, installation & improvements and maintenance

Additional Sub-Grantees & Contractors (preliminary list in-progress)

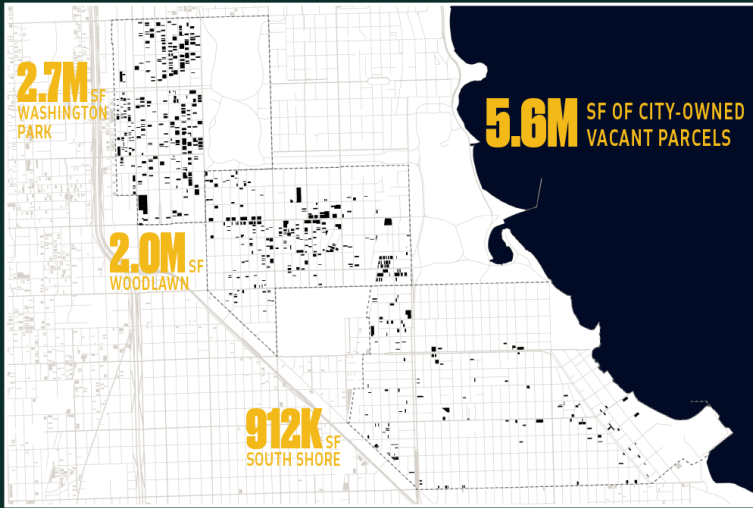
Providing, entrepreneurship training, youth training, community engagement, site design art & activation and maintenance



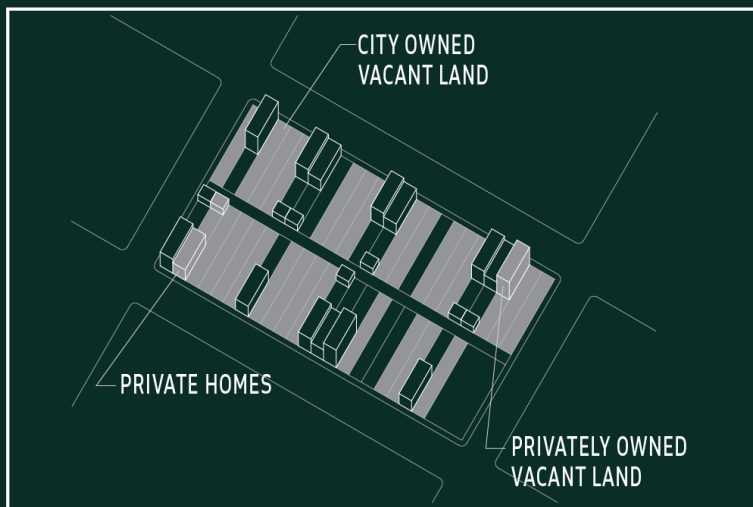
ES 2025 PLAN



IN EMERALD SOUTH VACANT LAND IS AN ASSET

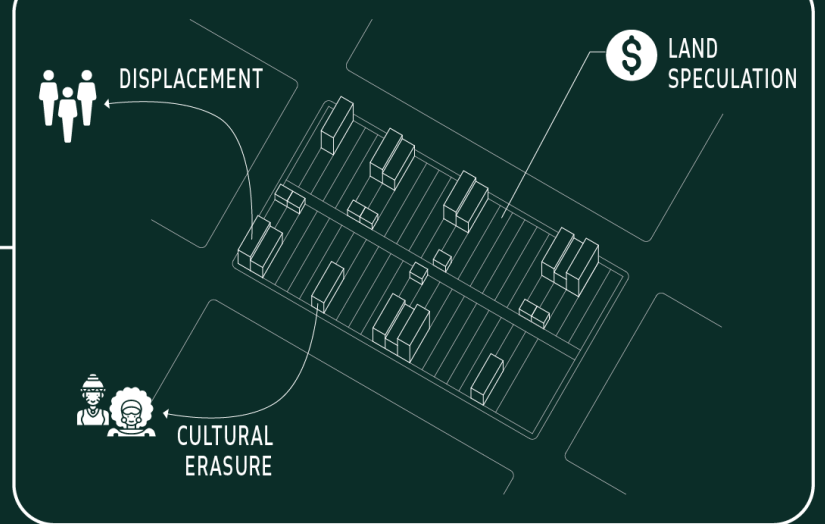


NOW IS THE TIME TO RECAPTURE ITS VALUE



WITH
TARGETED INVESTMENTS
THAT

PROTECT AGAINST NEGATIVE CONSEQUENCES



TRANSFORM VULNERABILITIES

